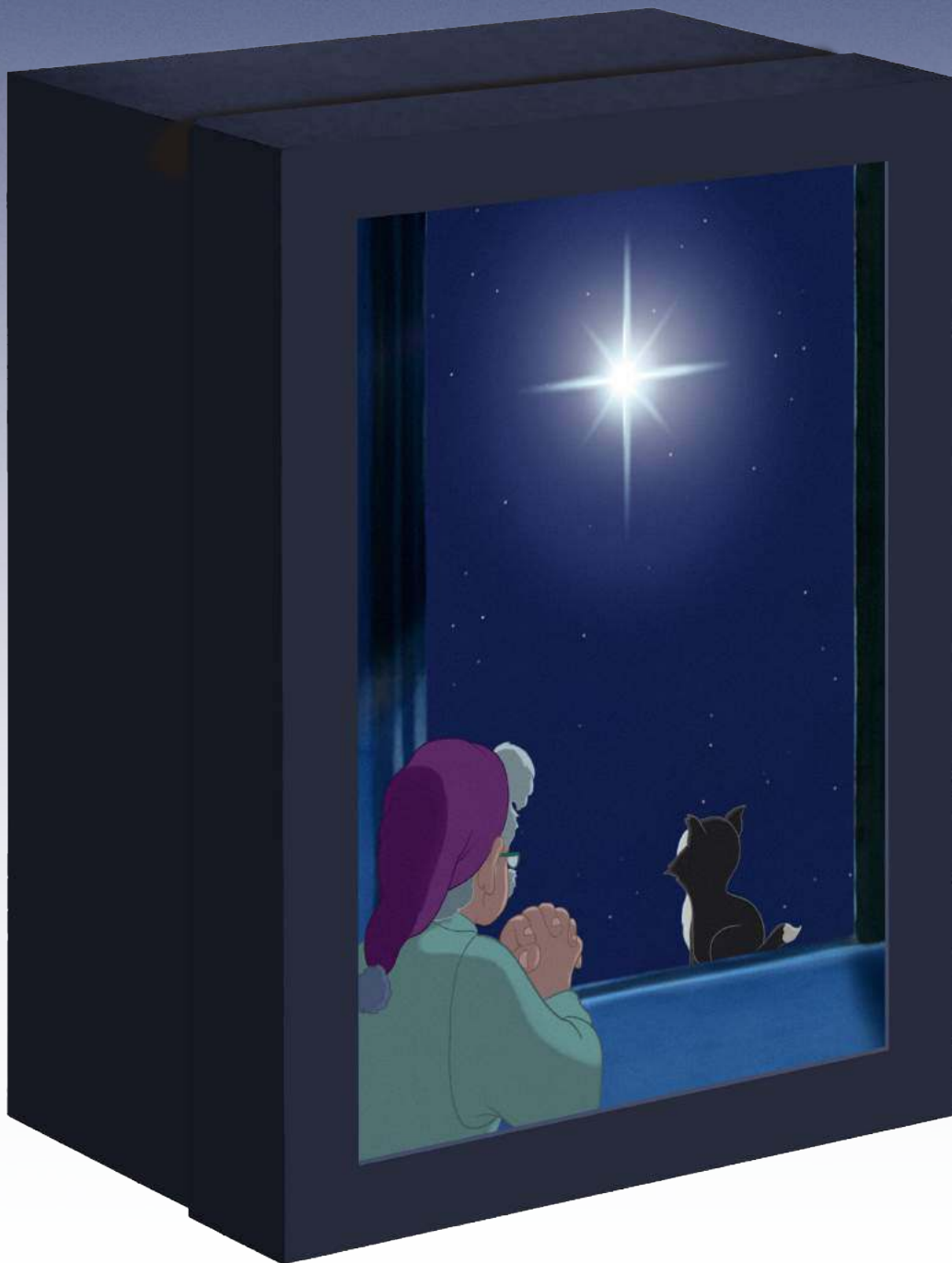


Disney
PINOCCHIO

Create your very own
WISH UPON A STAR Night Light Display



Enchant your bedroom with this beautiful, easy-to-make, night light display of Geppetto and Figaro wishing upon a star!

Printable
Graphic
+
Detailed
Instructions

NEXT PAGE 

Now Available On Digital HD & On Blu-ray™ January 31st



ADULT SUPERVISION REQUIRED. 1) Print this page. 2) Cut out image.  3) Follow instructions on next page »



Disney PINOCCHIO

WISH UPON A STAR Night Light Display

ADULT SUPERVISION IS REQUIRED FOR THIS ACTIVITY

YOU WILL NEED: 1 Shoe box or box similar in size | 1 LED tea light | Scissors | Printer | Paper | Tape | Glue or hot glue

INSTRUCTIONS: 1) Paint the outside of the box dark blue like the night sky. 2) Cut a window 7" x 9.5" in the center of the lid. 3) Print page 2 on high quality paper and cut off the white edges. Image should be = 7.5" x 10" size. 4) Tape image to the inside of the lid with the image face out. Tape edges down completely to avoid light leaks. 5) Poke a 1/2" hole into the bottom, center of the box toward the top. Try to poke your hole directly across from where the star is located on the front. *TIP: Removing the plastic candle tip from your tea light will make it much brighter!* 6) Use glue (or hot glue) to mount your LED light to the back, with the light bulb in the center of the hole and the switch on the outside. 7) Turn on the switch, turn out the lights and enjoy the enchanting glow of Gepetto and Figaro wishing upon a star. Now it's your turn. Make a wish!

